

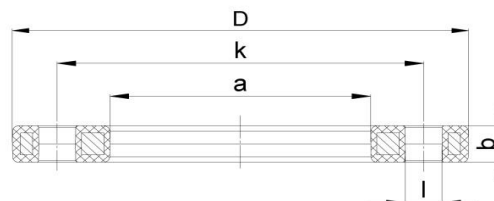
BACKING FLANGE, PP STEEL METRIC

03 Update - 05/2022

TECHNICAL DATA

| | |
|------------------------|-------------------|
| Article No | 001 517 7120 0025 |
| d (mm) | 25 |
| DN (mm) | 20 |
| D (mm) | 105 |
| a (mm) | 34 |
| k (mm) | 75 |
| b (mm) | 12 |
| l (mm) | 14 |
| Weight (Kg) | 0,285 |
| Box Quantity (pcs) | 48 |
| Box Dimension (pcs) | 31x24x16,5 |

INJECTION MOULDED



IDENTIFICATION OF PRODUCT

| | |
|--------------|---|
| D(mm) | 25 |
| BOLT CIRCLE | PN 10 / 16 |
| RAW METARIAL | PP %30 Glass-fibre Reinforced with steel ring UV-Resistant suitable for outdoor use |

SPECIFICATION

| | |
|------------------------|------|
| NUMBER OF HOLES | 4 |
| BOLT | M 12 |
| TIGHTENING TORQUE (Nm) | 15 |

| | |
|----------------|--|
| TRADEMARK | NTG |
| EXECUTION | Injection Moulded |
| PRESSURE CLASS | 16 Bar |
| STANDARD | ISO 7005 EN 1092 BS 4504 DIN 2501 |

Tolerance on diameters and thickness according to the standards. The other dimensions are specialized. Tolerance $\pm 5\%$. NTG PLASTIK reserves all the right to change any information without giving prior notice. The production, distribution and utilization of this document without explicit authorization is prohibited.